

# ORTHOPTERA FAUNA OF SĂLAJ COUNTY, ROMANIA

Gellért Puskás

Department of Zoology, Hungarian Natural History Museum, Budapest

**ABSTRACT:** Orthoptera fauna of Sălaj County, NW Romania is reviewed based on new and literature data. 63 species were collected during field investigations in 2014-2015, thus the known Orthoptera species in the region are 74 (30 Acridoidea, 3 Tetrigoidea, 1 Tridactyloidea, 7 Grylloidea, 33 Tettigonoidea). 9 species are recorded in the county for the first time (*Chorthippus mollis*, *Ch. montanus*, *Ch. vagans*, *Euchorthippus pulvinatus*, *Stenobothrus stigmaticus*, *Tetrix tuerki*, *Isophya kraussii*, *Metrioptera brachyptera*, *Pholidoptera frivaldszkyi*). *Isophya kraussii kraussii* is a new subspecies for the fauna of Romania. Correct original spelling of the name of *Ph. frivaldszkyi* (Herman, 1871) is fixed.

**Keywords:** Orthoptera, Sălaj County, *Isophya kraussii*, *Pholidoptera frivaldszkyi*, faunistics.

## INTRODUCTION:

Sălaj County is located in north-west Romania, in the historical regions of Crișana and Transylvania. The landscape is mostly hilly. Two branches of the Apuseni Mountains (Meseș and Plopiș Mts) stretch on the southern part of the county with the highest peak at 996 m above sea level. The climate is temperate continental, the annual precipitation is 700-800 mm. The annual mean temperature is 6°C in the mountains, 8°C in the hilly regions and 9°C in the depressions. The area of the county is 3864 km<sup>2</sup> with 62% of agricultural land, 27% of forests and 11% of inhabited areas. Pastures cover 7.9 km<sup>2</sup> and hayfields 3.1 km<sup>2</sup> (ANPM, 2007). Thus, less than 3% of the area of Sălaj County is covered by grasslands which are primary habitats of most Orthoptera species on temperate climate.

Although Carl Fuss, 1854 and Ottó Herman, 1871ab gave a serious contribution to the knowledge Orthoptera fauna of Transylvania, none of their works contain data from Sălaj.

Most of our knowledge of the region is originated from Gyula Pungur (in some papers with the latinized form of his name, Julius Pungur), a zoologist and grammar school teacher in Zalău. First Orthoptera data from the county occur in his paper about *Poecilimon schmidtii*. Interestingly, this study was published twice, in two different journals (Pungur, 1886ab). After two decades of faunistic investigations in Sălaj he published his results in 1891 (Pungur, 1891a). In this paper he enumerates 59 Orthoptera species and two varieties, however only 56 species are from the present territory of Sălaj County as a part of his collecting sites are located in counties Bihor, Hunedoara, Maramureș and Satu Mare. Some redundant data are found also in his monograph about the crickets of Hungary (Pungur, 1891b) and some further ones in the Orthoptera chapter of Fauna Regni Hungariae (Pungur, 1899).

In the 20th century no data from Sălaj were published despite the intensive faunistic and taxonomical research of adjacent regions (e.g. Kis, 1958, 1959, 1960, Kis & Kónya, 1967, 1972).

Recently, two villages of Țara Călatei (Kalotaszeg) gave place to an ethno-ecological research camp where Orthoptera fauna of the vicinity was studied as well (Molnár, in press).

## MATERIALS AND METHODS:

11 expeditions were carried out by zoologists of the Hungarian Natural History Museum for the study of invertebrate fauna of Sălaj County in 2014 and 2015 in the framework of a joint research program with the Vasile Goldiș Western University of Arad. Collecting sites are published in this volume (Gubányi, 2016). Author of present study participated in two collecting trips in 2014, in the course of which Orthoptera fauna of 35 localities were investigated (No. 57–96). Scattered data originate from further expeditions from altogether 25 places, thus Orthoptera data are available from 60 localities.

In order to collect orthopterans we primarily used methods of netting (sweeping) and hand collecting. Further methods were pitfall traps, light traps, leaf-hoover and in several cases treading mud. A considerable amount of data originate from visual and/or acoustic detection of Orthoptera species without collecting them.

Voucher specimens are deposited in Collection of Smaller Insect Orders, Department of Zoology, Hungarian Natural History Museum. 39 specimens of 36 species were sent to the Vasile Goldiș Western University of Arad.

The calling songs of several species were recorded using an M-Audio MicroTrack II Digital Recorder (sample rate: 96 kHz) or a Sony MZ-RH10 high density MiniDisc recorder with a Shure BG 4.0 condenser microphone (frequency response: 40-18000 Hz).

## RESULTS AND DISCUSSION:

On the collecting trips in Sălaj County in 2014-2015 altogether 507 records of presence of Orthoptera species were gathered from 60 localities (in some cases there were collectings on the same place in different expeditions, which are considered as different localities). Voucher specimens of 186 records were collected and preserved, 321 records are based on field observations. Altogether 476 Orthoptera specimens were collected.

In the course of our field studies 63 Orthoptera species were found, thus the number of known species in Sălaj County is 74. This is 41% of the Romanian fauna and 80% of the species number known from the Transylvanian Plateau (Iorgu & al., 2008).

Nine species are mentioned for the first time from the county: *Chorthippus mollis* (Charp.), *Ch. montanus* (Charp.), *Ch. vagans* (Ev.), *Euchorthippus pulvinatus* (F.W.), *Stenobothrus stigmaticus* (Ramb.), *Tetrix tuerki* (Kr.), *Isophya kraussii* (Br.W.), *Metrioptera brachyptera* (L.) and *Pholidoptera frivaldszkyi* (Herm.).

We report *Isophya kraussii kraussii* as a new subspecies for the Romanian fauna. This species was known in the country east of the Carpathian Mountains and based on acoustic analysis and morphology those populations were described recently as a different subspecies, *I. kraussii moldavica* Iorgu & Heller, 2013. According to Kis, 1960 old literature data of *I. pyreneae* (= *I. kraussii*) from Romania refer mostly to *I. brevipennis* (= *I. camptoxypha*) and in smaller part to *I. stysi*. *I. kraussii kraussii* is distributed in Central and S Germany, Czech Republic, Slovakia, S Poland, E Austria, E Slovenia, N Croatia, W and N Hungary (Iorgu & Heller, 2013). Closest known localities are in NE Hungary: in the Aggtelek karst (Nagy & al., 1999), Bükk Mts (Nagy & Rácz, 1996) and Zemplén Mts (Nagy & al., 1998) as well as in SE Slovakia (Krištín & al., 2011, Krištín & Kaňuch, 2015). We found only a single population on a forest edge and wet meadow near Carastelec.

*Pholidoptera frivaldszkyi* (Herm.) was found in the southern part of the Meseş Mts in tall and very dense bushy grasslands. Spelling of the name of this species is quite inconsequent in the literature therefore here we give some notes about the circumstances of its description and fix the correct original spelling.

The study in which Herman described this taxon has two versions in two different journals, one is written in German (Herman, 1871a) and the another one in Hungarian, with German summary (Herman, 1871b). The previous one uses consequently the name „*Thamnotrizon Friwaldskyi*”. Contrarily, in the latter paper three name variants occur: „*Th. Frivaldszkyi*” in the description (p. 108), „*Th. Friwaldskyi*” in the species list (p. 109) and „*Th. Friwaldskyi*” in the German summary (p. XIII). None of the papers give etymology but it is obvious that the name is given in honour of János Frivaldszky (1822–1895) or Imre Frivaldszky (1799–1870), both of them eminent Hungarian entomologists and naturalists. Both papers are published in the same year and closer date is not specified in any of them. Therefore the principle of priority is not applicable.

Interestingly, a fourth spelling („*frivaldszkyi*”) was used later frequently which does not occur in any versions of the original paper of Herman. This name variant originates probably from Brunner von Wattenwyl, 1882. Országh & Fedor, 2005 argued correctly that this is an incorrect subsequent spelling. Besides they stated that the correct original spelling of the name is *Pholidoptera friwaldszkyi* (Herman, 1871). Nevertheless their opinion was wrong as they ignored the two simultaneous papers of Herman (1871ab) with multiple original spellings. In such cases the first reviser chooses the correct spelling (ICZN Code Art. 24.2.3.). As nobody cited together the different

spellings of this name previously, now we fix *Thamnotrizon frivaldszkyi* Herman, 1871 as the correct original spelling. Thus, *Pholidoptera frivaldszkyi* (Herman, 1871) is the valid name of the species.

Specific identity of Pungur's names are uncertain in several cases. Unfortunately, his collection probably does not exist any more and cannot help us solving this problem.

„*Tettix bipunctatus*” (Pungur 1891a) could be referred to as *Tetrix kraussi* Saulcy known from the neighbouring territories (mostly as *T. bipunctata*) (Kis, 1958, Kis & Kónya, 1967, Iorgu & al, 2008) and despite not having yet found, probably occurs also in Sălaj. However, this name covers more probably at least partly *T. tenuicornis* (Sahlb.), a widespread species in the region.

„*Barbitistes serricauda*” (Pungur, 1891a, 1899) is most likely *B. constrictus* Br.Watt. which is a widespread species in Transylvania whereas *B. serricauda* (Fabr.) is very rare (Kis & Vasiliu, 1970). We had the opportunity to study the collection of Herman preserved in the Zoological Museum of the Babeş-Bolyai University, Cluj-Napoca where we could ascertain that all the specimens under name „*B. serricauda*” (Herman, 1871ab) are actually *B. constrictus*. The same misidentification was experienced in the collection of Arnold Müller in Sibiu (Kis & Vasiliu, 1970).

The most problematic issue is the identification of Pungur's names in the genus *Isophya*. Pungur, 1891a, 1899 mentions three species from Sălaj: „*modesta*”, „*brevipennis*” and „*camptoscypha*” and a form with longitudinal brown and violet-coloured stripes on the abdomen of the latter one (*var. festiva*). These refer very probably to the three more common species of the region: *I. camptoxypha*, *I. modesta* and *I. stysi*, however, it is difficult or even impossible to decide which is which. Pungur, 1891a stated that he found *brevipennis*” and „*camptoscypha*” on forest edges and clearings whereas „*modesta*” on hayfields. Currently *I. brevipennis* Br.W. is regarded as a junior synonym of *I. camptoxypha* (Fieb.) (Heller & al., 2004).

In the Herman collection there are consequently *I. camptoxypha* specimens under the name „*Odontura modesta*” and *I. stysi* specimens under „*O. camptoxypha*”. Pungur, 1891a indicates that his „*I. brevipennis*” data are the first from the territory of Transylvania. These two facts would suggest that Pungur's „*brevipennis*” would be the missing species from the Herman collection, *I. modesta* Friv.. However, it is known that Pungur had a visit in the collection of Brunner von Wattenwyl (Herman, 1907) therefore he could know Brunner's *I. brevipennis* (syn. of *I. camptoxypha*). Moreover, it is implausible that „*brevipennis*” (= „short winged”) described not long before would refer to *I. modesta* having the longest tegmina among these species.

Thus, the most probable but still uncertain explanation is as follows:

1) Contrary to Herman (1871ab), Pungur (1891a, 1899) used the appropriate name for *I. modesta*.

2) *I. camptoxypha* is named by him as „*brevipennis*”, similarly to most of authors in the 20. century (e.g. Harz, 1969, Kis, 1960, Nagy & Szövényi, 1997, Nagy, 2003).

3) Pungur's „*camptoscypha*” (and Herman's „*camptoxypha*”) refer to *I. stysi*, a species described more than half a century later (Čejchan, 1957). Our investigations show that *I. stysi* is the most common *Isophya* species in Sălaj. Pungur, 1891a also mentions „*camptoscypha*” from more places than „*brevipennis*” (three and a single, respectively).

It is remarkable that *Euchorthippus declivus* (Bris.) is missing from the list of Pungur, 1891a although it is a common species in xeric grasslands of Sălaj and Herman, 1871ab also mentions it in Transylvania. This species may be commuted in the region with *Chorthippus oschei* Helv. but it is quite unlikely because Pungur, 1891a mentioned „*Stenobothrus elegans*” in moist places which are typical habitats of the latter species. Therefore it is assumable that the lack of *E. declivus* from the study of Pungur, 1891a is only due to an accidental error.

#### A revised list of Orthoptera species known from Sălaj County with faunistical data

Localities are given only with the name of the settlement and its Hungarian name in parentheses. Among literature data if the name of the locality in the original publication differs from these we put it in square brackets. We show only the identification number of our collecting sites, exact data of them are found below this list.

#### CAELIFERA

##### Acrididae

##### *Calliptamus italicus* (Linnaeus, 1758)

*Caloptenus italicus* Pungur, 1891a

**Literature data:** Benesat (Benedekfalva), Camăr (Kémer), Carastelec (Kárásztelek), Gârceiu (Szilágygörcsön) [Görcsön], Jibou (Zsibó) [Zsibó (Rákóczi-hegy)], Nuşfalău (Szilágynagyfalva) [Nagyfalva], Uileacu Şimleului (Somlyóújlak) [Somlyó-Ujlak], Zalău (Zilah) (Pungur, 1891a); Jebucu (Zsobok), Stana (Sztána) (Molnár, in print).

**New records:** Aghireş (Egrespatak): 85, 234; Almaşu (Váralmás): 87; Cliş (Csúrfalva): 93, 94; Dersida (Kisderzsida): 76; Popeni (Szilágyapatelek): 90; Pria (Perje): 81; Sfăraş (Farnas): 88; Surduc (Szurduk): 91; Ugruţi (Ugróc): 96.

##### *Odontopodisma rubripes* (Ramme, 1931)

*Pezotettix mendax* Pungur, 1891a

**Literature data:** Fetindia (Gurzófalva), Gălpăia (Galponya), Moigrad-Porolissum (Mojgrád), Năpradea (Náprád), Şimleu Silvaniei (Szilágyosomlyó) [Valkóvár romjai] (Pungur, 1891a); Jebucu (Zsobok), Stana (Sztána) (Molnár, in print).

**New records:** Aghireş (Egrespatak): 60; Carastelec (Kárásztelek): 75; Cehei (Somlyócehei): 74, 78; Cliş (Csúrfalva): 93; Crasna (Kraszna): 57; Huta (Csákyújfalu): 82, 67A: 69A; Iaz (Kraszna): 65; Mesteacănu (Almásnyíres): 86; Şimleu Silvaniei (Szilágyosomlyó): 72; Valcău de Jos (Alsóvalkó): 63.

##### *Pseudopodisma transilvanica* Galvagni & Fontana, 1993

*Pezotettix Schmidtii* Pungur, 1891a

*Pseudopodisma* sp. Molnár, in print

**Literature data:** Camăr (Kémer), Drighiu (Detrethem) [Detrehen], Gârceiu (Szilágygörcsön) [Görcsön], Iaz (Kraszna): [Jaáz], Mirşid (Nyirsid), Nuşfalău (Szilágynagyfalva) [Nagyfalva], Plopiş (Gyümölcsényes) [Gyümölcsényes], Racăş (Almásrákos) [Rákos], Stârciu (Bogdánháza), Zalău (Zilah) (Pungur, 1891a); Jebucu (Zsobok) (Molnár, in print).

**New records:** Mesteacănu (Almásnyíres): 86; Pria (Perje): 80.

**Notes:** Determination of our material is based on the examination of male genitalia. Data of this genus with unidentified specific identity not far from our locality (Molnár, in print) is probably conspecific.

##### *Arcyptera fusca* (Pallas, 1773)

*Strophyma fuscum* Pungur, 1891a

**Literature data:** Bogdana (Kásapatak) [Kásapatak (Meszes hegység)] (Pungur, 1891a).

**New records:** Pria (Perje): 80, 81.

##### *Chorthippus apricarius* (Linnaeus, 1758)

**Literature data:** Jebucu (Zsobok), Stana (Sztána) (Molnár, in print).

**New records:** Aghireş (Egrespatak): 85; Sfăraş (Farnas): 88.

##### *Chorthippus biguttulus* (Linnaeus, 1758)

*Stenobothrus biguttulus* Pungur, 1891a

**Literature data:** Bogdana (Kásapatak) [Kásapatak (Kozmi-erdő)], Meseşeni de Sus (Oláhkecel) [Gurzófalva (Terbetehegy)], Şimleu Silvaniei (Szilágyosomlyó) [Valkóvár romjai] (Pungur, 1891a); Stana (Sztána) (Molnár, in print).

**New records:** Aghireş (Egrespatak): 85; Almaşu (Váralmás): 87; Cehei (Somlyócehei): 78; Cizer (Csiszér): 79; Cliş (Csúrfalva): 92, 93: 94; Mesteacănu (Almásnyíres): 86; Popeni (Szilágyapatelek): 90; Pria (Perje): 80, 81; Sfăraş (Farnas): 88; Surduc (Szurduk): 91; Tusa (Tuszatelke): 123; Ugruţi (Ugróc): 96.

##### *Chorthippus brunneus* (Thunberg, 1815)

*Stenobothrus bicolor* Pungur, 1891a

**Literature data:** Dioşod (Diósad), Gârceiu (Szilágygörcsön) [Görcsön], Nuşfalău (Szilágynagyfalva) [Nagyfalva] (Pungur, 1891a); Jebucu (Zsobok), Stana (Sztána) (Molnár, in print).

**New records:** Aghireş (Egrespatak): 60, 85; Almaşu (Váralmás): 87; Baica (Bányika): 89; Carastelec (Kárásztelek): 75; Cliş (Csúrfalva): 92; Dersida (Kisderzsida): 76; Huta (Csákyújfalu): 82; Iaz (Kraszna): 61A; Popeni (Szilágyapatelek): 90; Pria (Perje): 80, 81; Sfăraş (Farnas): 88; Şimleu Silvaniei (Szilágyosomlyó): 72; Surduc (Szurduk): 91; Ugruţi (Ugróc): 96.

##### *Chorthippus dorsatus* (Zetterstedt, 1821)

*Stenobothrus dorsatus* Pungur, 1891a

**Literature data:** Gârceiu (Szilágygörcsön) [Görcsön], Nuşfalău (Szilágynagyfalva) [Nagyfalva], Zalău (Zilah) (Pungur, 1891a); Jebucu (Zsobok), Stana (Sztána) (Molnár, in print).

**New records:** Aghireş (Egrespatak): 85; Baica (Bányika): 89; Cehei (Somlyócehei): 78; Cliş (Csúrfalva): 92, 93: 94; Huta (Csákyújfalu): 82; Mesteacănu (Almásnyíres): 86; Popeni (Szilágyapatelek): 90; Pria (Perje): 80, 81; Sfăraş (Farnas): 88; Surduc (Szurduk): 91; Ugruţi (Ugróc): 96.

*Chorthippus mollis* (Charpentier, 1825)

**New records:** Aghireş (Egrespatak): 85; Popeni (Szilágyaptelek): 90; Pria (Perje): 81; Sfăraş (Farnas): 88; Ugruţiu (Ugróc): 96.

**Notes:** New for the fauna of Sălaj County.

*Chorthippus montanus* (Charpentier, 1825)

**New records:** Huta (Csákyújfalú): 264.

**Notes:** New for the fauna of Sălaj County.

*Chorthippus oschei pusztensis* Vedenina & Helversen, 2009

*Stenobothrus elegans* Pungur, 1891a

**Literature data:** Aluniş (Szamoszézplak) [Szamoszézplak], Cehei (Somlyócsehi) [Somlyó-Csehi], Iaz (Krasznajáz) [Jaáz], Nuşfalău (Szilágynagyfalú) [Nagyfalú], Panic (Szilágypanit) [Panit] (Pungur, 1891a).

**New records:** Cehei (Somlyócsehi): 74; Surduc (Szurduk): 91.

*Chorthippus parallelus* (Zetterstedt, 1821)

*Stenobothrus parallelus* Pungur, 1891a

*Pseudochorthippus parallelus* Molnár, in print

**Literature data:** Cehei (Somlyócsehi) [Somlyó-Csehi], Iaz (Krasznajáz) [Jaáz], Jibou (Zsibó), Nápradea (Náprád), Nuşfalău (Szilágynagyfalú) [Nagyfalú], Zalău (Zilah) (Pungur, 1891a); Jebucu (Zsobok), Stana (Sztána) (Molnár, in print).

**New records:** Aghireş (Egrespatak): 85, 234; Baica (Bányika): 89; Carastelec (Kárásztelek): 75; Cehei (Somlyócsehi): 74, 78; Cehu Silvaniei (Szilágycseh): 77; Cizer (Csiszér): 79; Cliţ (Csúrfalva): 92, 93; Crasna (Kraszna): 57; Dersida (Kisderzsida): 76; Huta (Csákyújfalú): 66, 82; Mesteacănu (Almásnyíres): 86; Popeni (Szilágyaptelek): 90; Pria (Perje): 80, 81; Sfăraş (Farnas): 88; Surduc (Szurduk): 91; Zalău (Zilah): 224.

*Chorthippus vagans* (Eversmann, 1848)

**New records:** Cliţ (Csúrfalva): 92.

**Notes:** New for the fauna of Sălaj County.

*Chrysochraon dispar* (Germar, 1834)

**Literature data:** Jebucu (Zsobok), Stana (Sztána) (Molnár, in print).

**New records:** Cehei (Somlyócsehi): 78; Cehu Silvaniei (Szilágycseh): 77; Crasna (Kraszna): 236; Huta (Csákyújfalú): 82; Mesteacănu (Almásnyíres): 86; Pria (Perje): 80.

*Euchorthippus declivus* (Brisout de Barneville, 1848)

**Literature data:** Jebucu (Zsobok), Stana (Sztána) (Molnár, in print).

**New records:** Almaşu (Váralmás): 87; Baica (Bányika): 89; Carastelec (Kárásztelek): 75; Cehei (Somlyócsehi): 78; Cizer (Csiszér): 79; Cliţ (Csúrfalva): 92; Dersida (Kisderzsida): 76; Huta (Csákyújfalú): 66, 82; Meseşenii de Jos (Magyarkecel): 59; Mesteacănu (Almásnyíres): 86; Popeni (Szilágyaptelek): 90; Pria (Perje): 80, 81; Sfăraş (Farnas): 88; Surduc (Szurduk): 91; Treznea (Ördögkút): 227; Ugruţiu (Ugróc): 96.

**Notes:** This taxon is noticeably missing from the list of Pungur, 1891a although it is a common species in xeric grasslands of the region.

*Euchorthippus pulvinatus* (Fischer von Waldheim, 1846)

**New records:** Almaşu (Váralmás): 87; Huta (Csákyújfalú): 82; Mesteacănu (Almásnyíres): 86.

**Notes:** New for the fauna of Sălaj County.

*Euthystira brachyptera* (Ocskay, 1826)

*Chrysochraon brachypterus* Pungur, 1891a

**Literature data:** Cehu Silvaniei (Szilágycseh) [Szilágycseh], Cristur-Crişeni (Szilágyfőkeresztúr) [Szilágyfőkeresztúr], Gârceiu (Szilágygörcsön) [Görcsön], Nuşfalău (Szilágynagyfalú) [Nagyfalú], Şimleu Silvaniei (Szilágyosomlyó) [Somlyó], Zalău (Zilah) (Pungur, 1891a); Jebucu (Zsobok), Stana (Sztána) (Molnár, in print).

**New records:** Baica (Bányika): 89; Carastelec (Kárásztelek): 75; Cehei (Somlyócsehi): 78; Cizer (Csiszér): 79; Huta (Csákyújfalú): 66, 82: 67A, 69A; Iaz (Krasznajáz): 65; Mesteacănu (Almásnyíres): 86; Pria (Perje): 68, 80; Sfăraş (Farnas): 88; Valcău de Jos (Alsóvalkó): 63.

*Gomphocerippus rufus* (Linnaeus, 1758)

*Gomphocerippus rufus* Pungur, 1891a

**Literature data:** Cristur-Crişeni (Szilágyfőkeresztúr) [Szilágyfőkeresztúr], Gârceiu (Szilágygörcsön) [Görcsön], Şimleu Silvaniei (Szilágyosomlyó) [Valkóvár romjai], Zalău (Zilah) (Pungur, 1891a).

**New records:** Aghireş (Egrespatak): 85; Huta (Csákyújfalú): 82; Pria (Perje): 80.

*Omocestus rufipes* (Zetterstedt, 1821)

*Stenobothrus rufipes* Pungur, 1891a

**Literature data:** Crasna (Kraszna), Zalău (Zilah), Jibou (Zsibó), Nuşfalău (Szilágynagyfalú) [Nagyfalú], Pericei (Szilágypercesen) [Percesen] (Pungur, 1891a); Jebucu (Zsobok), Stana (Sztána) (Molnár, in print).

**New records:** Aghireş (Egrespatak): 85; Almaşu (Váralmás): 87; Baica (Bányika): 89; Cehei (Somlyócsehi): 74, 78; Cehu Silvaniei (Szilágycseh): 77; Cizer (Csiszér): 79; Cliţ (Csúrfalva): 92, 93: 94; Crasna (Kraszna): 57; Dersida (Kisderzsida): 76; Huta (Csákyújfalú): 66, 82; Iaz (Krasznajáz): 61A; Meseşenii de Jos (Magyarkecel): 59; Mesteacănu (Almásnyíres): 86; Popeni (Szilágyaptelek): 90; Pria (Perje): 81; Sfăraş (Farnas): 88; Şimleu Silvaniei (Szilágyosomlyó): 72, 73; Surduc (Szurduk): 91; Ugruţiu (Ugróc): 96; Valcău de Jos (Alsóvalkó): 63, 64.

*Stenobothrus crassipes* (Charpentier, 1825)

**Literature data:** Cristur-Crişeni (Szilágyfőkeresztúr) [Szilágyfőkeresztúr], Ratin (Ráton) (Pungur, 1891a); Jebucu (Zsobok) (Molnár, in print).

*Stenobothrus lineatus* (Panzer, 1796)

**Literature data:** Cristur-Crişeni (Szilágyfőkeresztúr) [Szilágyfőkeresztúr], Nuşfalău (Szilágynagyfalú) [Nagyfalú], Zalău (Zilah) (Pungur, 1891a); Jebucu (Zsobok), Stana (Sztána) (Molnár, in print).

**New records:** Cizer (Csiszér): 79; Cliţ (Csúrfalva): 92, 93: 94; Huta (Csákyújfalú): 82; Mesteacănu (Almásnyíres): 86; Popeni (Szilágyaptelek): 90; Pria (Perje): 80, 81; Sfăraş (Farnas): 88.

*Stenobothrus nigromaculatus* (Herrich-Schäffer, 1840)

**Literature data:** Nuşfalău (Szilágynagyfalú) [Nagyfalú], Şimleu Silvaniei (Szilágyosomlyó) [Somlyó], Zalău (Zilah) (Pungur, 1891a); Jebucu (Zsobok), Stana (Sztána) (Molnár, in print).

**New records:** Popeni (Szilágyaptelek): 90; Sfăraş (Farnas): 88; Ugruţiu (Ugróc): 96; Vălişoara (Dióspatak): 271.

*Stenobothrus rubicundulus* Kruseman & Jeekel, 1967

**Literature data:** Jebucu (Zsobok) (Molnár, in print).

**New records:** Sfăraş (Farnas): 88.

*Stenobothrus stigmaticus* (Rambur, 1838)

**New records:** Cliș (Csűrfalva): 94; Popeni (Szilágyaptelek): 90; Pria (Perje): 81.

**Notes:** New for the fauna of Sălaj County.

*Aiolopus thalassinus* (Fabricius, 1781)

*Epacromia thalassina* Pungur, 1891a

**Literature data:** Cehei (Somlyócsehi) [Somlyó-Csehi], Jibou (Zsibó), Ratin (Ráton), Someș-Odorhei (Szamosudvarhely) [Szamos-Udvarhely] (Pungur, 1891a); Jebucu (Zsobok) (Molnár, in print).

**New records:** Baica (Bányika): 89; Surduc (Szurduk): 91.

*Mecostethus parapleurus* (Hagenbach, 1822)

*Parapleurus alliaceus* Pungur, 1899

**Literature data:** Gârceiu (Szilágygörcsön) [Görcsön] (Pungur, 1899); Jebucu (Zsobok), Stana (Sztána) (Molnár, in print).

**New records:** Cehei (Somlyócsehi): 78.

*Oedipoda caerulescens* (Linnaeus, 1758)

*Oedipoda caerulescens* Pungur, 1891a

**Literature data:** Benesat (Benedekfalva), Camăr (Kémer), Cizer (Csizér), Chilioara (Szilágykirva) [Kirva], Plopiș (Gyümölcsénes) [Gyümölcsényes], Treznea (Ördögkút), Zalău (Zilah) (Pungur, 1891a); Jebucu (Zsobok), Stana (Sztána) (Molnár, in print).

**New records:** Almașu (Váralmás): 87; Cliș (Csűrfalva): 93, 94; Huta (Csákyújfalú): 66; Mesteacănu (Almásnyíres): 86; Pria (Perje): 80, 81; Sfârș (Farnas): 88.

*Psophus stridulus* (Linnaeus, 1758)

**Literature data:** Bogdana (Kásapatak) [Kásapatak (Kozmi-erdő)], Meseșeni de Sus (Oláhkecel) [Gurzófalva (Terbetehegy)], Pria (Perje) [Perje (Magurahegy)] (Pungur, 1891a); Jebucu (Zsobok) (Molnár, in print).

**New records:** Sfârș (Farnas): 88.

*Sphingonotus caeruleans* (Linnaeus, 1767)

*Sphingonotus caeruleans* Pungur, 1891a, 1899

**Literature data:** Gârceiu (Szilágygörcsön) [Görcsön], Popteleac (Paptelke) [Paptelke] (Pungur, 1891a, 1899).

*Stethophyma grossum* (Linnaeus, 1758)

*Mecostethus grossus* Pungur, 1891a

**Literature data:** Cehei (Somlyócsehi) [Somlyó-Csehi], Hereclean (Haraklány) [Haraklán], Iaz (Krasznajáz) [Jaáz], Jibou (Zsibó), Nușfalău (Szilágynagyfalú) [Nagyfalú], Panic (Szilágypanit) [Panit] (Pungur, 1891a); Jebucu (Zsobok), Stana (Sztána) (Molnár, in print).

## Tetrigidae

*Tetrix subulata* (Linnaeus, 1758)

*Tetrix subulatus* Pungur, 1891a

**Literature data:** Borla (Szilágyballa) [Ballá], Buciumi (Vármező), Cehu Silvaniei (Szilágycseh) [Szilágy-Cseh], Dobrin (Debren), Gârceiu (Szilágygörcsön) [Görcsön], Ilișua (Selymesilosva) [Ilosva], Jibou (Zsibó), Lompirt (Szilágylompért) [Lompért], Nușfalău (Szilágynagyfalú) [Nagyfalú], Șimleu Silvaniei (Szilágyosomlyó) [Somlyó], Tihău (Tihó), Valea Pomilor (Mocsolya), Var (Szamosörmező), Zalău (Zilah) [Örmező] (Pungur, 1891a).

**New records:** Baica (Bányika): 89; Cehu Silvaniei (Szilágycseh): 77; Crasna (Kraszna): 57; Iaz (Krasznajáz): 61A.

*Tetrix tenuicornis* (Sahlberg, 1891)

*Tetrix bipunctatus* Pungur, 1891a

**Literature data:** Buciumi (Vármező), Camăr (Kémer), Cizer (Csizér), Crasna (Kraszna), Deja (Dësháza) [Deézsháza], Nușfalău (Szilágynagyfalú) [Nagyfalú], Șarmășag (Sarmaság), Tihău (Tihó), Treznea (Ördögkút), Zăuan (Szilágyzovány) [Zovány] (Pungur, 1891a).

**New records:** Aghireș (Egrespatak): 252; Almașu (Váralmás): 87; Borla (Szilágyballa): 162; Crasna (Kraszna): 57; Dersida (Kisderzsida): 76; Iaz (Krasznajáz): 61A; Tusa (Tuszatelke): 62.

*Tetrix tuerki* (Krauss, 1876)

**New records:** Almașu (Váralmás): 87; Surduc (Szurduk): 91.

**Notes:** New for the fauna of Sălaj County.

## Trydactylidae

*Xya variegata* (Latreille, 1809)

*Tridactylus variegatus* Pungur, 1891ab

**Literature data:** Năpradea (Năprád), Jibou (Zsibó) (Pungur, 1891ab).

**New records:** Almașu (Váralmás): 87.

## ENSIFERA

## Gryllidae

*Acheta domestica* (Linnaeus, 1758)

*Gryllus domestica* Pungur, 1891ab

**Literature data:** Cehu Silvaniei (Szilágycseh) [Szilágy-Cseh], Crasna (Kraszna), Făgetu (Magyarpatak), Jibou (Zsibó), Nușfalău (Szilágynagyfalú) [Nagyfalú], Șimleu Silvaniei (Szilágyosomlyó) [Somlyó], Zalău (Zilah) (Pungur, 1891ab).

*Gryllus campestris* Linnaeus, 1758

**Literature data:** Crasna (Kraszna), Gârceiu (Szilágygörcsön) [Görcsön], Jibou (Zsibó), Nușfalău (Szilágynagyfalú) [Nagyfalú], Șarmășag (Sarmaság), Șimleu Silvaniei (Szilágyosomlyó) [Somlyó], Zalău (Zilah) (Pungur, 1891ab); Jebucu (Zsobok), Stana (Sztána) (Molnár, in print).

**New records:** Aghireș (Egrespatak): 85; Almașu (Váralmás): 87; Cehei (Somlyócsehi): 74; Cizer (Csizér): 79; Cliș (Csűrfalva): 92, 94; Cliș (Csűrfalva): 170; Crasna (Kraszna): 57, 58; Dersida (Kisderzsida): 76; Huta (Csákyújfalú): 66, 69A; Iaz (Krasznajáz): 61A; Meseșeni de Jos (Magyarkecel): 59; Pria (Perje): 68; Șimleu Silvaniei (Szilágyosomlyó): 72; Surduc (Szurduk): 167; Tihău (Tihó): 157; Tusa (Tuszatelke): 62, 123; Valcău de Jos (Alsóvalkó): 63, 64.

*Melanogryllus desertus* (Pallas, 1771)

*Gryllus desertus* Pungur, 1891a

*Gryllus melas* Pungur, 1891b

**Literature data:** Cehu Silvaniei (Szilágycseh) [Szilágy-Cseh], Crasna (Kraszna), Iaz (Krasznajáz) [Jaáz], Jibou (Zsibó), Năpradea (Năprád), Nușfalău (Szilágynagyfalú) [Nagyfalú], Șarmășag (Sarmaság), Șimleu Silvaniei (Szilágyosomlyó) [Somlyó], Stărciu (Bogdánháza) (Pungur, 1891ab); Jebucu (Zsobok), Stana (Sztána) (Molnár, in print).

**New records:** Almașu (Váralmás): 117; Baica (Bányika): 89; Carastelec (Kárásztelek): 75; Cehei (Somlyócsehi): 74, 78; Dersida (Kisderzsida): 76; Iaz (Krasznajáz): 61A; Șimleu Silvaniei (Szilágyosomlyó): 73; .

*Modicogryllus frontalis* (Fieber, 1844)*Gryllus frontalis* Pungur, 1891ab**Literature data:** Gârceiu (Szilágygörcsön) [Görcsön], Iaz (Krasznajáz) [Jaáz], Nuşfalău (Szilágynagyfalú) [Nagyfalú], Zalău (Zilah) (Pungur, 1891ab); Stana (Sztána) (Molnár, in print).**New records:** Crasna (Kraszna): 58; Iaz (Krasznajáz): 61A; Valcău de Jos (Alsóvalkó): 63; .*Pteronemobius heydenii* (Fischer, 1853)*Nemobius Heydenii* Pungur, 1891ab, 1899**Literature data:** Iaz (Krasznajáz) [Jaáz], Zalău (Zilah) (Pungur, 1891ab, 1899).**New records:** Almaşu (Váralmás): 87, 117; Carastelec (Kárásztelek): 75; Cehei (Somlyócehi): 74, 78; Cehu Silvaniei (Szilágycseh): 77; Cizer (Csiszér): 79; Cliţ (Csűrfa): 94; Crasna (Kraszna): 57, 58; Iaz (Krasznajáz): 104, 61A.*Oecanthus pellucens* (Scopoli, 1763)**Literature data:** Camăr (Kémer), Cehu Silvaniei (Szilágycseh) [Szilágy-Cseh], Crasna (Kraszna), Gârceiu (Szilágygörcsön) [Görcsön], Jibou (Zsibó), Nuşfalău (Szilágynagyfalú) [Nagyfalú], Pericei (Szilágypercesen) [Percesen], Şimleu Silvaniei (SzilágySomlyó) [Somlyó], Zalău (Zilah) (Pungur, 1891ab); Jebucu (Zsobok), Stana (Sztána) (Molnár, in print).**New records:** Aghireş (Egrespatak): 85; Almaşu (Váralmás): 87; Baica (Bányika): 89; Cehei (Somlyócehi): 78; Cizer (Csiszér): 79; Huta (Csákyújfalú): 82; Mesteacănu (Almásnyíres): 86; Popeni (Szilágyaptelek): 90; Sfăraş (Farnas): 88; Ugruţi (Ugróc): 96.

## Gryllotalpidae

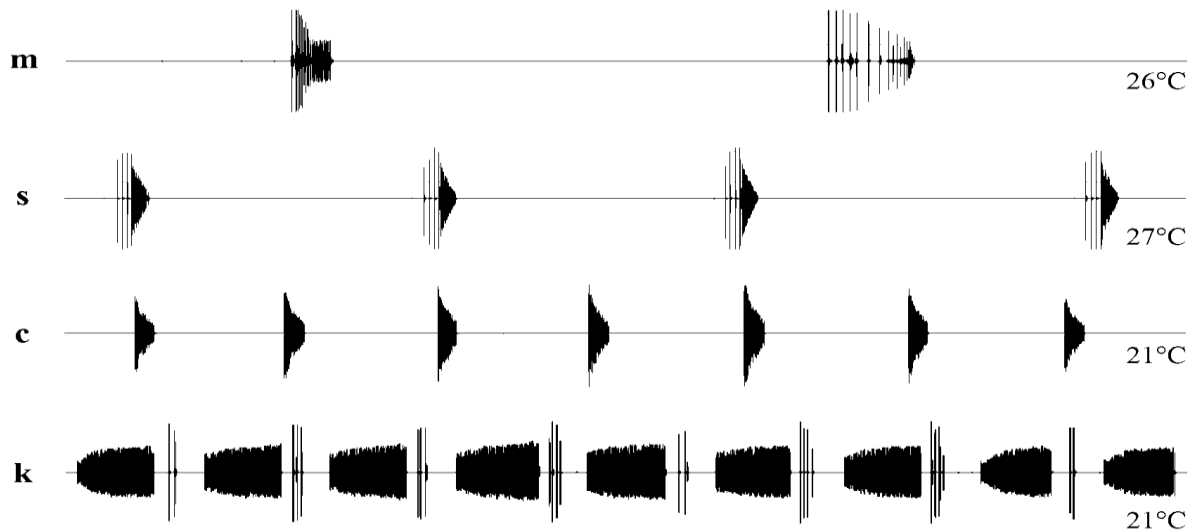
*Gryllotalpa gryllotalpa* (Linnaeus, 1758)*Gryllotalpa vulgaris* Pungur, 1891a**Literature data:** Benesat (Benedekfalva), Camăr (Kémer), Cehu Silvaniei (Szilágycseh) [Szilágy-Cseh], Chechiş (Kettősmező), Gălpâia (Galponya), Gârceiu (Szilágygörcsön) [Görcsön], Iaz (Krasznajáz) [Jaáz], Ip (Ipp), Jibou (Zsibó), Mineu (Menyő), Moigrad-Porolissum (Mojgrád), Nuşfalău (Szilágynagyfalú) [Nagyfalú], Şarmăşag (Sarmaság), Zalău (Zilah), Zăuan (Szilágyzovány) [Zovány] (Pungur, 1891a).**New records:** Baica (Bányika): 89; Crasna (Kraszna): 57; Iaz (Krasznajáz): 28, 61A; Tihău (Tihó): 176.

## Tettigoniidae

*Ephippiger ephippiger* (Fiebig, 1784)*Ephippigera vitium* Pungur, 1891a**Literature data:** Bogdana (Kásapatak) [Kásapatak (Kozmi-erdő)] (Pungur, 1891a); Jebucu (Zsobok), Stana (Sztána) (Molnár, in print).**New records:** Huta (Csákyújfalú): 82; Mesteacănu (Almásnyíres): 86; Sfăraş (Farnas): 88.*Conocephalus dorsalis* (Latreille, 1804)*Xiphidium dorsale* Pungur, 1891a**Literature data:** Nuşfalău (Szilágynagyfalú) [Nagyfalú] (Pungur, 1891a); Jebucu (Zsobok) (Molnár, in print).**New records:** Cehei (Somlyócehi): 78.*Conocephalus fuscus* (Fabricius, 1793)*Xiphidium fuscum* Pungur, 1891a**Literature data:** Gârceiu (Szilágygörcsön) [Görcsön], Hereclean (Haraklány) [Haraklán], Iaz (Krasznajáz)

[Jaáz], Panic (Szilágypanit) [Panit], Zalău (Zilah) (Pungur, 1891a); Jebucu (Zsobok), Stana (Sztána) (Molnár, in print).

**New records:** Aghireş (Egrespatak): 252; Almaşu (Váralmás): 87; Baica (Bányika): 89; Cehei (Somlyócehi): 78; Cehu Silvaniei (Szilágycseh): 77; Cliţ (Csűrfa): 92, 93; 94; Crasna (Kraszna): 57; Huta (Csákyújfalú): 66, 82; 264; Popeni (Szilágyaptelek): 90; Valcău de Jos (Alsóvalkó): 63, 64.*Ruspolia nitidula* (Scopoli, 1786)*Conocephalus mandibularis* Pungur, 1891a*Conocephalus tuberculata* Pungur, 1899**Literature data:** Nuşfalău (Szilágynagyfalú) [Nagyfalú ("Barátrét")] (Pungur, 1891a, 1899); Jebucu (Zsobok) (Molnár, in print).**New records:** Aghireş (Egrespatak): 85, 234; Baica (Bányika): 89; Cehei (Somlyócehi): 78; Cehu Silvaniei (Szilágycseh): 77; Cizer (Csiszér): 79; Dersida (Kisderzsida): 76; Sfăraş (Farnas): 88.*Meconema thalassinum* (De Geer, 1773)*Meconema varium* Pungur, 1891a**Literature data:** Bogdana (Kásapatak), Gârceiu (Szilágygörcsön) [Görcsön], Jibou (Zsibó), Nuşfalău (Szilágynagyfalú) [Nagyfalú], Zalău (Zilah) (Pungur, 1891a); Stana (Sztána) (Molnár, in print).**New records:** Aghireş (Egrespatak): 85; Pria (Perje): 80; Şimleu Silvaniei (SzilágySomlyó): 72.*Barbitistes constrictus* Brunner von Wattenwyl, 1878*Barbitistes serricauda* Pungur, 1891a, 1899**Literature data:** Zalău (Zilah) [Zilah (Észak hegy)] (Pungur, 1891a); Meseş Mts [montes Meszes] (Pungur, 1899).*Isophya camptoxypha* (Fieber, 1853)*(Odontura modesta* Herman, 1871ab)*Isophya brevipennis* Pungur, 1891a, 1899**Literature data:** Zalău (Zilah) [Zilah (Sármás-irtás)] (Pungur, 1891a, 1899) (Pungur, 1891a).**New records:** Cehei (Somlyócehi): 74; Pria (Perje): 68; Şimleu Silvaniei (SzilágySomlyó): 72.*Isophya kraussii kraussii* Brunner von Wattenwyl, 1878**New records:** Carastelec (Kárásztelek): 56, 75.**Notes:** New species for the fauna of Sălaj County and new subspecies for the Romanian fauna.*Isophya modesta modesta* (Fruvaldszky, 1868)*Isophya modesta* Pungur, 1891a, 1899**Literature data:** Gârceiu (Szilágygörcsön) [Görcsön], Nuşfalău (Szilágynagyfalú) [Nagyfalú], Zalău (Zilah) (Pungur, 1891a, 1899).**New records:** Aghireş (Egrespatak): 60, 85; Sfăraş (Farnas): 88.*Isophya stysi* Čejchan, 1957*(Odontura camptoxypha* Herman, 1871ab)*Isophya camptoscypha* Pungur, 1891a*Isophya camptoscypha* var. *festiva* Pungur, 1891a**Literature data:** Gârceiu (Szilágygörcsön) [Görcsön], Zalău (Zilah), Zalău [Zilah (Meszeshegy)] (Pungur, 1891a); Jebucu (Zsobok), Stana (Sztána) (Molnár, in print).**New records:** Cizer (Csiszér): 79; Huta (Csákyújfalú): 82, 69A; Iaz (Krasznajáz): 65; Mesteacănu (Almásnyíres): 86; Pria (Perje): 68, 80.



**Fig. 1.:** Male calling song of *Isophya* species found in the region (oscillograms of 5 sec. song duration). **m:** *I. modesta* (Mt. Domogled), **s:** *I. stysi* (Pria, No.80), **c:** *I. camptoxypha* (Iaz, No.65), **k:** *I. kraussii kraussii* (Carastelec, No.75).

*Leptophyes albovittata* (Kollar, 1833)

**Literature data:** Fetindia (Gurzófalva), Gârceiu (Szilágygörcsön) [Görcsön], Jac (Zsákfalva), Nuşfalău (Szilágynagyfalva) [Nagyfalva], Zalău (Zilah) (Pungur, 1891a); Jebucu (Zsobok), Stana (Sztána) (Molnár, in print).

**New records:** Aghireş (Egrespatak): 60, 85; Almaşu (Váralmás): 87; Carastelec (Kárásztelek): 75; Cehei (Somlyócsehi): 74; Cliş (Csűrfalva): 92; Crasna (Kraszna): 58; Dersida (Kisderzsida): 76; Huta (Csákyújfalva): 66, 82: 69A; Iaz (Krasznajáz): 65, 61A; Meseşeni de Jos (Magyarkecel): 59; Mesteacănu (Almásnyíres): 86; Popeni (Szilágypátelek): 90; Pria (Perje): 80; Sfăraş (Farnas): 88; Şimleu Silvaniei (Szilágyosomlyó): 72; Treznea (Ördögkút): 227, 228; Valcău de Jos (Alsóvalkó): 64; Zalău (Zilah): 224.

*Leptophyes discoidalis* (Frivaldszky, 1868)

*Leptophyes punctatissima* Molnár, in print

**Literature data:** Jebucu (Zsobok), Stana (Sztána) (Molnár, in print).

**New records:** Valcău de Jos (Alsóvalkó): 64.

**Notes:** Among four data of *L. discoidalis* there occurs a *L. punctatissima* in Molnár, in print. Latter name is due to an accidental error and refers also to this species (Molnár, pers. comm.).

*Phaneroptera falcata* (Poda, 1761)

**Literature data:** Benesat (Benedekfalva), Gârceiu (Szilágygörcsön) [Görcsön], Jibou (Zsibó), Mineu (Menyő), Nuşfalău (Szilágynagyfalva) [Nagyfalva], Şimleu Silvaniei (Szilágyosomlyó) [Somlyó], Zalău (Zilah) (Pungur, 1891a); Jebucu (Zsobok) (Molnár, in print).

**New records:** Aghireş (Egrespatak): 85, 234; Carastelec (Kárásztelek): 75; Cehei (Somlyócsehi): 78; Cliş (Csűrfalva): 92, 93: 94; Huta (Csákyújfalva): 66, 82; Mesteacănu (Almásnyíres): 86; Popeni (Szilágypátelek): 90; Pria (Perje): 80, 81; Sfăraş (Farnas): 88; Şimleu Silvaniei (Szilágyosomlyó): 72; Ugruţiu (Ugróc): 96.

*Phaneroptera nana* Fieber, 1853

**Literature data:** Jebucu (Zsobok), Stana (Sztána) (Molnár, in print).

**Notes:** During our field works we collected only *Ph.*

*falcata* in Sălaj. Nevertheless, Molnár (in print) found the more thermophilous *Ph. nana* much more prevalent in the southernmost part of the county.

*Poecilimon fussii* Fieber, 1878

*Poecilimon elegans* Pungur, 1891a

*Poecilimon fussi* Pungur, 1899

**Literature data:** Jac (Zsákfalva) (Pungur, 1891a, 1899); Jebucu (Zsobok) (Molnár, in print).

*Poecilimon schmidtii* (Fieber, 1853)

*Poecilimon Schmidtii* Pungur, 1886ab, 1899

**Literature data:** Meseş and Plopiş Mts [Meszes- és Réz-hegység] (Pungur, 1886ab); Fetindia (Gurzófalva), Zalău (Zilah) (Pungur, 1891a); Meseş Mts [montes Meszes] (Pungur, 1899); Jebucu (Zsobok), Stana (Sztána) (Molnár, in print).

**New records:** Iaz (Krasznajáz): 61A; Pria (Perje): 80; Şimleu Silvaniei (Szilágyosomlyó): 72, 73; Tusa (Tuszatelke): 62; Zalău (Zilah): 224.

*Polysarcus denticauda* (Charpentier, 1825)

*Orphania denticauda* Pungur, 1891a

**Literature data:** Jac (Zsákfalva), Nuşfalău (Szilágynagyfalva) [Nagyfalva], Zalău (Zilah) (Pungur, 1891a).

**New records:** Aghireş (Egrespatak): 60; Borla (Szilágyballa): 162; Cehei (Somlyócsehi): 74; Crasna (Kraszna): 57.

*Decticus verrucivorus* (Linnaeus, 1758)

**Literature data:** „everywhere in the county” (Pungur, 1891a); Jebucu (Zsobok), Stana (Sztána) (Molnár, in print).

**New records:** Aghireş (Egrespatak): 60, 85; Cizer (Csiszér): 79; Cliş (Csűrfalva): 94; Dersida (Kisderzsida): 76; Huta (Csákyújfalva): 82, 69A; Mesteacănu (Almásnyíres): 86; Popeni (Szilágypátelek): 90; Pria (Perje): 68, 80: 81; Sfăraş (Farnas): 88; Valcău de Jos (Alsóvalkó): 64.

*Gampsocleis glabra* (Herbst, 1786)

**Literature data:** Jebucu (Zsobok) (Molnár, in print).

*Bicolorana bicolor* (Philippi, 1830)

*Platycleis bicolor* Pungur, 1891a

*Metriopectera bicolor* Molnár, in print

**Literature data:** Cehei (Somlyócsehi) [Somlyó-Csehi], Gârceiu (Szilágygörcsön) [Görcsön], Nuşfalău (Szilágynagyfalú) [Nagyfalú], Zalău (Zilah) (Pungur, 1891a); Jebucu (Zsobok), Stana (Sztána) (Molnár, in print).

**New records:** Aghireş (Egrespatak): 85; Carastelec (Kárásztelek): 75; Cizer (Csiszér): 79; Cliş (Csúrfalva): 92; Dersida (Kisderzsida): 76; Huta (Csákyújfalú): 66, 82; 69A; Iaz (Krasznajáz): 65, 61A; Meseşeni de Jos (Magyarkecel): 59; Mesteacănu (Almásnyíres): 86; Popeni (Szilágyaptelek): 90; Pria (Perje): 68, 80; 81; Sfăraş (Farnas): 88; Valcău de Jos (Alsóvalkó): 63.

*Metriopectera brachyptera* (Linnaeus, 1761)

**New records:** Pria (Perje): 80.

**Notes:** New for the fauna of Sălaj County.

*Roeseliana roeselii* (Hagenbach, 1822)

*Platycleis Roeselii* Pungur, 1891a

*Platycleis Roeselii* var. *diluta* Pungur, 1891a

*Platycleis Roeselii* Pungur, 1899

*Platycleis Roeselii* var. *diluta* Pungur, 1899

*Metriopectera roeselii* Molnár, in print

**Literature data:** Cehei (Somlyócsehi) [Somlyó-Csehi], Iaz (Krasznajáz) [Jaáz] (Pungur, 1891a, 1899); Meseş Mts [montes Meszes] (Pungur, 1899); Jebucu (Zsobok), Stana (Sztána) (Molnár, in print).

**New records:** Aghireş (Egrespatak): 85; Carastelec (Kárásztelek): 75; Cehei (Somlyócsehi): 74; Cizer (Csiszér): 79; Crasna (Kraszna): 57; Huta (Csákyújfalú): 66, 82; Iaz (Krasznajáz): 65; Mesteacănu (Almásnyíres): 86; Pria (Perje): 80; Valcău de Jos (Alsóvalkó): 64.

*Pachytrachis gracilis* (Brunner von Wattenwyl, 1861)

*Pachytrachelus gracilis* Pungur, 1891a

**Literature data:** Zalău (Zilah) (Pungur, 1891a).

**New records:** Aghireş (Egrespatak): 60, 85; Carastelec (Kárásztelek): 75; Cizer (Csiszér): 79; Cliş (Csúrfalva): 92; Dersida (Kisderzsida): 76; Huta (Csákyújfalú): 82, 67A; 69A; Iaz (Krasznajáz): 65, 61A; Mesteacănu (Almásnyíres): 86; Pria (Perje): 80; Şimleu Silvaniei (Szilágyosomlyó): 72, 73; Valcău de Jos (Alsóvalkó): 64; Zalău (Zilah): 224, 225.

*Pholidoptera fallax* (Fischer, 1853)

*Thamnotrizon fallax* Pungur, 1891a

**Literature data:** Gârceiu (Szilágygörcsön) [Görcsön], Nuşfalău (Szilágynagyfalú) [Nagyfalú], Şimleu Silvaniei (Szilágyosomlyó) [Somlyó], Zalău (Zilah) (Pungur, 1891a); Jebucu (Zsobok), Stana (Sztána) (Molnár, in print).

**New records:** Aghireş (Egrespatak): 60, 85; Huta (Csákyújfalú): 69A; Pria (Perje): 68, 80; Sfăraş (Farnas): 88.

*Pholidoptera frivaldszkyi* (Herman, 1871)

**New records:** Huta (Csákyújfalú): 82, 69A; Mesteacănu (Almásnyíres): 86.

**Notes:** New for the fauna of Sălaj County.

*Pholidoptera griseoptera* (De Geer, 1773)

*Thamnotrizon cinerascens* Pungur, 1891a

**Literature data:** Bogdana (Kásapatak), Fetindia (Gurzófalva), Moigrad-Porolissum (Mojgrad), Nuşfalău (Szilágynagyfalú) [Nagyfalú], Plopiş (Gyümölcsényes) [Gyümölcsényes], Şimleu Silvaniei (Szilágyosomlyó) [valkóvár romjai], Zalău (Zilah) (Pungur, 1891a); Jebucu (Zsobok), Stana (Sztána) (Molnár, in print).

**New records:** Aluniş (Szamoszféplak): 128; Carastelec (Kárásztelek): 75; Cliş (Csúrfalva): 93; Huta (Csákyújfalú): 66, 67A; Pria (Perje): 68, 80; Şimleu Silvaniei (Szilágyosomlyó): 72, 73; Treznea (Ördögkút): 100, 227; Tusa (Tuszatelke): 62; Valcău de Jos (Alsóvalkó): 63, 64; Zalău (Zilah): 225.

*Pholidoptera transsylvanica* (Fischer, 1853)

*Thamnotrizon Transsylvanicus* Pungur, 1891a

**Literature data:** Fetindia (Gurzófalva), Jibou (Zsibó), Zalău (Zilah) (Pungur, 1891a); Jebucu (Zsobok), Stana (Sztána) (Molnár, in print).

**New records:** Cizer (Csiszér): 79; Cliş (Csúrfalva): 92; Huta (Csákyújfalú): 82, 69A; Mesteacănu (Almásnyíres): 86; Pria (Perje): 68, 80.

*Montana montana* (Kollar, 1833)

*Platycleis montana* Pungur, 1891a, 1899

**Literature data:** Gârceiu (Szilágygörcsön) [Görcsön], Nuşfalău (Szilágynagyfalú) [Nagyfalú] (Pungur, 1891a, 1899).

*Platycleis affinis* Fieber, 1853

**Literature data:** Stana (Sztána) (Molnár, in print).

*Platycleis grisea* (Fabricius, 1781)

**Literature data:** Bilghez (Bürgezd), Gârceiu (Szilágygörcsön) [Görcsön], Nuşfalău (Szilágynagyfalú) [Nagyfalú], Şimleu Silvaniei (Szilágyosomlyó) [Somlyó] (Pungur, 1891a); Jebucu (Zsobok), Stana (Sztána) (Molnár, in print).

**New records:** Cliş (Csúrfalva): 92; Dersida (Kisderzsida): 76; Huta (Csákyújfalú): 66; Popeni (Szilágyaptelek): 90; Pria (Perje): 80, 81; Sfăraş (Farnas): 88; Şimleu Silvaniei (Szilágyosomlyó): 72; Tusa (Tuszatelke): 123; Ugruţiu (Ugróc): 96.

*Tettigonia cantans* (Fuessly, 1775)

*Locusta cantans* Pungur, 1891a

**Literature data:** Fetindia (Gurzófalva), Zalău (Zilah) (Pungur, 1891a).

**New records:** Huta (Csákyújfalú): 82; Pria (Perje): 80.

*Tettigonia caudata* (Charpentier, 1842)

*Locusta caudata* Pungur, 1891a

**Literature data:** Nuşfalău (Szilágynagyfalú) [Nagyfalú], Jac (Zsákfalva), Zalău (Zilah) (Pungur, 1891a).

*Tettigonia viridissima* (Linnaeus, 1758)

*Locusta viridissima* Pungur, 1891a

**Literature data:** Gârceiu (Szilágygörcsön) [Görcsön], Nuşfalău (Szilágynagyfalú) [Nagyfalú], Şimleu Silvaniei (Szilágyosomlyó) [Somlyó], Zalău (Zilah) (Pungur, 1891a); Jebucu (Zsobok), Stana (Sztána) (Molnár, in print).

**New records:** Aghireş (Egrespatak): 60, 85; Carastelec (Kárásztelek): 75; Cehei (Somlyócsehi): 74; Cehu Silvaniei (Szilágycseh): 77; Crasna (Kraszna): 57, 58; Dersida (Kisderzsida): 76; Huta (Csákyújfalú): 66, 82; 67A, 69A; Iaz (Krasznajáz): 65, 61A; Mesteacănu (Almásnyíres): 86; Pria (Perje): 68, 80; Sfăraş (Farnas): 88; Şimleu Silvaniei (Szilágyosomlyó): 72, 73; Tusa (Tuszatelke): 62; Ugruţiu (Ugróc): 96; Valcău de Jos (Alsóvalkó): 63, 64.



**List of localities**

For full list of collecting sites in Sălaj County see Gubányi, 2016.

- 14: Munții Plopiș (Réz-hegység), Iaz (Krasznajáz), Mlaștina de la Iaz 1, marsh, 24.04.2014, N47.111° E22.661°; treading mud, leg. Cs. Kutasi.
- 26: Dealurile Crasnei (Krasznamenti-dombság), 1.5km NNW of Cehei (Somlyócsehi), Balta Cehei, 25.04.2014, N47.269° E22.754°; treading mud, leg. Cs. Kutasi.
- 28: Munții Plopiș (Réz-hegység), Iaz (Krasznajáz), Mlaștina de la Iaz 2, puddle, pastures, 19.05.2014, N47.111° E22.659°; leg. Zs. Bálint, A. Gubányi, G. Katona & Cs. Kutasi.
- 32: Dealurile Crasnei (Krasznamenti-dombság), Aghireș (Egrespatak), dry swards, 20.05.2014, N47.157° E22.993°; pitfall traps, leg. Cs. Kutasi & G. Katona.
- 56: Dealurile Crasnei (Krasznamenti-dombság), Carastelec (Kárásztelek), wet meadow, 24.05.2014, N47.317° E22.746°; sweeping, leg. Cs. Kutasi.
- 57: Dealurile Crasnei (Krasznamenti-dombság), Crasna (Kraszna), Vârșoț (Varsolc) Reservoir, 230m, wet meadows, 2.06.2014, N47.177° E22.889°; leg. A. Orosz, G. Puskás, Z. Soltész & M. Tóth.
- 58: Dealurile Crasnei (Krasznamenti-dombság), Crasna (Kraszna), Vârșoț (Varsolc) Reservoir, 240m, shore and dry grassland, 02.06.2014, N47.178° E22.908°; leg. A. Orosz, G. Puskás, Z. Soltész & M. Tóth.
- 59: Dealurile Crasnei (Krasznamenti-dombság), N of Meseșenii de Jos (Magyarkecel), 270m, dry pasture, 02.06.2014, N47.163° E22.956°; leg. A. Orosz, G. Puskás, Z. Soltész & M. Tóth.
- 60: Dealurile Crasnei (Krasznamenti-dombság), W of Aghireș (Egrespatak), 320m, xeromesophile grassland and forest edge, 02-03.06.2014, N47.157° E22.992°; leg. A. Orosz, G. Puskás, Z. Soltész & M. Tóth.
- 61A: Munții Plopiș (Réz-hegység), Iaz (Krasznajáz), 320m, swamp, 03.06.2014, N47.111° E22.659°; leg. A. Orosz, G. Puskás, Z. Soltész & M. Tóth.
- 62: Munții Plopiș (Réz-hegység), Tusa (Tuszatálke), above the village, at Barcău (Berettyó) springs, 640m, pasture, 03.06.2014, N47.02° E22.749°; leg. A. Orosz, G. Puskás, Z. Soltész & M. Tóth.
- 63: Dealurile Crasnei (Krasznamenti-dombság), between Lazuri (Újvágás) and Valcău de Jos (Alsóvalkó), 280m, orchard, 03.06.2014, N47.109° E22.749°; leg. A. Orosz, G. Puskás, Z. Soltész & M. Tóth.
- 64: Dealurile Crasnei (Krasznamenti-dombság), between Valcău de Jos (Alsóvalkó) and Boghiș (Szilágybagos), at Barcău (Berettyó) River, 240m, meadows, 03.06.2014, N47.139° E22.739°; leg. A. Orosz, G. Puskás, Z. Soltész & M. Tóth.
- 65: Munții Plopiș (Réz-hegység), Iaz (Krasznajáz), 320m, hayfield, 03.06.2014, N47.111° E22.666°, 320m; leg. G. Puskás.
- 66: Munții Meseșului (Meszes-hegység), 1 km E of Huta (Csákyújfalu), 460m, grazed dry grassland, 04.06.2014, N47.015° E22.963°; leg. A. Orosz, G. Puskás, Z. Soltész & M. Tóth.
- 67A: Munții Meseșului (Meszes-hegység), 1.5 km SW of Huta (Csákyújfalu), 550m, forest clearing, 04.06.2014, N46.999° E22.931°; leg. A. Orosz, G. Puskás, Z. Soltész & M. Tóth.
- 68: Munții Meseșului (Meszes-hegység), Pria (Perje), SW slope of Vf. Măgura Priei (Perjei csúcs), 890m, pasture and forest edge, 04.06.2014, N47.007° E22.9°; leg. A. Orosz, G. Puskás, Z. Soltész & M. Tóth.
- 69: Munții Meseșului (Meszes-hegység), 2.5 km SW of Huta (Csákyújfalu), at Poicu Stream, 610m, xeromesophile meadow, 04.06.2014, N46.986° E22.917°; leg. A. Orosz, G. Puskás, Z. Soltész & M. Tóth.
- 72: Dealurile Crasnei (Krasznamenti-dombság), Șimleu Silvaniei (Szilágyosomlyó), 360–520m, forest edges, 05.06.2014, N47.239° E22.79°; leg. A. Orosz, G. Puskás, Z. Soltész & M. Tóth.
- 73: Dealurile Crasnei (Krasznamenti-dombság), Șimleu Silvaniei (Szilágyosomlyó), 300m, covered creek and forest edge, 05.06.2014, N47.237° E22.804°; leg. A. Orosz, G. Puskás, Z. Soltész & M. Tóth.
- 74: Dealurile Crasnei (Krasznamenti-dombság), 1.5km NNW of Cehei (Somlyócsehi), Balta Cehei, 200m, wet meadow, 05.06.2014, N47.268° E22.754°; leg. A. Orosz, G. Puskás, Z. Soltész & M. Tóth.
- 75: Dealurile Crasnei (Krasznamenti-dombság), Carastelec (Kárásztelek), 240m, forest edge, dry grassland and swamp, 05.06.2014, N47.304° E22.671°; leg. A. Orosz, G. Puskás, Z. Soltész & M. Tóth.
- 76: Dealurile Sălajului (Szilágymenti-dombság), Dersida (Kisderzsida), 200m, bushy pasture, 06.06.2014, N47.384° E22.807°, 200m; leg. A. Orosz, G. Puskás, Z. Soltész & M. Tóth.
- 77: Dealurile Crasnei (Krasznamenti-dombság), Cehu Silvaniei (Szilágycseh), 180m, wet bushy shore vegetation, 11.08.2014, N47.44° E23.16°; leg. A. Gubányi, G. Katona, A. Orosz & G. Puskás.
- 78: Dealurile Crasnei (Krasznamenti-dombság), 1.5km NNW of Cehei (Somlyócsehi), Balta Cehei, 200m, wet meadow, 11–14.08.2014,

- N47.266° E22.755°; leg. A. Gubányi, G. Katona, A. Orosz & G. Puskás.
- 79: Munții Meseșului (Meszes-hegység), Cizer (Csiszér), 510m, forestside grassland and creek 12.08.2014, N47.021° E22.864°; leg. G. Katona, A. Orosz & G. Puskás.
- 80: Munții Meseșului (Meszes-hegység), Pria (Perje), SW slope of Vf. Măgura Priei (Perjei csúcs), 830–950m, pasture and forest edge, 12.08.2014, N47.008° E22.906°; leg. G. Katona, A. Orosz & G. Puskás.
- 81: Munții Meseșului (Meszes-hegység), Pria (Perje), W of Vf. Măgura Priei (Perjei csúcs), 680m, pasture, 12.08.2014, N47.004° E22.882°; leg. G. Katona, A. Orosz & G. Puskás.
- 82: Munții Meseșului (Meszes-hegység), 2.5 km SW of Huta (Csákyújfalú), at Poicu Stream, 610m, xeromesophile and wet meadow, 12.08.2014, N46.986° E22.917°; leg. G. Katona, A. Orosz & G. Puskás.
- 85: Dealurile Crasnei (Krasznamenti-dombság), W of Aghireș (Egrespatak), 320m, xeromesophile grassland and forest edge, 12-13.08.2014, N47.157° E22.992°; leg. G. Katona, A. Orosz & G. Puskás.
- 86: Munții Meseșului (Meszes-hegység), 4.5 km W of Mesteacănu (Almásnyíres), 600m, bushy meadow and orchard, 13.08.2014, N46.969° E22.959°; leg. G. Katona, A. Orosz & G. Puskás.
- 87: Depresiunea Almaș–Agrij (Almás–Egrefy-medence), between Băbiu (Bábony) and Almașu (Váralmás), shore of Băbiu Stream, 340m, 13.08.2014, N46.954° E23.099°; leg. G. Katona, A. Orosz & G. Puskás.
- 88: Depresiunea Almaș–Agrij (Almás–Egrefy-medence), Sfăraș (Farnas), 400m, grazed hillside with calcium sulfate soil, 13.08.2014, N46.897° E23.101°; leg. G. Katona, A. Orosz & G. Puskás.
- 89: Depresiunea Almaș–Agrij (Almás–Egrefy-medence), Baica (Bányika), Băcuța Stream, 280m, pasture and shore, 13.08.2014, N47.073° E23.269°; leg. G. Katona, A. Orosz & G. Puskás.
- 90: Dealurile Sălajului (Szilágymenti-dombság), Popeni (Szilágyaptelek), 240m, grazed hillsides, 14.08.2014, N47.25° E23.189°; leg. G. Katona, A. Orosz & G. Puskás.
- 91: Culoarul Someșului (Szamos völgye), between Surduc (Szurduk) and Cliț (Csúrfalva), Someș (Szamos) River, 200m, shore and pastures, 14.08.2014, N47.29° E23.367°; leg. G. Katona, A. Orosz & G. Puskás.
- 92: Culoarul Someșului (Szamos völgye), Cliț (Csúrfalva), 220m, grassland stripe with *Calluna vulgaris* below sandstone rock, 14.08.2014, N47.29° E23.422°; leg. G. Katona, A. Orosz & G. Puskás.
- 93: Culoarul Someșului (Szamos völgye), Cliț (Csúrfalva), 240m, valley-bottom grassland stripes and forest ecotone, 14.08.2014, N47.284° E23.447°; leg. G. Katona, A. Orosz & G. Puskás.
- 94: Culoarul Someșului (Szamos völgye), Cliț (Csúrfalva), 220m, hillside with acid sandy pasture and brook, 14.08.2014, N47.292° E23.432°; leg. G. Katona, A. Orosz & G. Puskás.
- 96: Depresiunea Almaș–Agrij (Almás–Egrefy-medence), NW of Ugruțiu (Ugróc), 300m, grazed hillsides, 14.08.2014, N47.017° E23.367°; leg. G. Katona, A. Orosz & G. Puskás.
- 100: Munții Meseșului (Meszes-hegység), Treznea (Ördögkút), upper valley of the Treznea Stream, 29.09.2014, N47.111° E23.050°; leg. Zs. Bálint, L. Dányi, G. Katona & D. Murányi.
- 104: Munții Plopiș (Réz-hegység), Iaz (Krasznajáz), peat bog and ruins of the bath, 30.09.2014, N47.111° E22.659°; hand collecting, leg. Zs. Bálint, L. Dányi, G. Katona & D. Murányi.
- 117: Depresiunea Almaș–Agrij (Almás–Egrefy-medence), between Băbiu (Bábony) and Almașu (Váralmás), shore of Băbiu Stream, 01.10.2014, N46.953° E23.096°; leg. Zs. Bálint, L. Dányi, G. Katona & D. Murányi.
- 123: Munții Plopiș (Réz-hegység), Tusa (Tuszatelke), Ponor, 02.10.2014, N47.012° E22.742°; hand collecting, leg. Zs. Bálint, L. Dányi, G. Katona & D. Murányi.
- 128: Dealurile Sălajului (Szilágymenti-dombság), Aluniș (Szamoszézplak), 03.10.2014, N47.371° E23.267°; leg. Zs. Bálint, L. Dányi, G. Katona & D. Murányi.
- 157: Depresiunea Almaș–Agrij (Almás–Egrefy-medence), 1.5km NW Tihău (Tihó), Almașu (Almás) Stream, sandy bank under road bridge, 29.04.2015, N47.231° E23.317°, 190m; treading mud, leg. A. Gubányi, Cs. Kutasi & Gy. Makranczy.
- 162: Dealurile Sălajului (Szilágymenti-dombság), Borla (Szilágyballa), abandoned arable land, 10.05.2015, N47.265° E22.938°; sweeping, leg. A. Grabant, O. Merkl, A. Podlussány, V. Szőke.
- 167: Culoarul Someșului (Szamos völgye), Surduc (Szurduk), pasture, 11.05.2015, N47.291° E23.374°; hand collecting, leg. A. Grabant, O. Merkl, V. Szőke.
- 170: Culoarul Someșului (Szamos völgye), Cliț (Csúrfalva), hornbeam-oak forest, 11.05.2015, N47.284° E23.439°; hand collecting, leg. A. Grabant, O. Merkl, V. Szőke.
- 176: Depresiunea Almaș–Agrij (Almás–Egrefy-medence), Tihău (Tihó), Almaș valley, streamside, 11.05.2015, N47.232° E23.316°; hand collecting, leg. A. Grabant, O. Merkl, V. Szőke.

- 224: Munții Meseșului (Meszes-hegység), pass near Zalău (Zilah), at a spring and a car park on road 81E, 14.07.2015, N47.154° E23.090°, 482m; hand collecting, leg. Z. Erőss, A. Kenéz, P.G. Sulyán, Z. Vas.
- 225: Munții Meseșului (Meszes-hegység), beech forest, 14.07.2015, N47.145° E23.085°, 598m; hand collecting, leg. Z. Erőss, A. Kenéz, P.G. Sulyán, Z. Vas.
- 227: Munții Meseșului (Meszes-hegység), rocky roadside with ruderal vegetation, 14.07.2015, N47.122° E23.097°, 391m; hand collecting, leg. Z. Erőss, A. Kenéz, P.G. Sulyán, Z. Vas.
- 228: Munții Meseșului (Meszes-hegység), Treznea (Ördökgút), alongside creek, wet meadow, 14.07.2015, N47.109° E23.073°, 366m; hand collecting leg. Z. Erőss, A. Kenéz, P.G. Sulyán, Z. Vas.
- 234: Dealurile Crasnei (Krasznamenti-dombság), Aghireș (Egrespatak), dry sward with loess wall and abandoned orchard, 15.07.2015, N47.157° E22.994°, 330m; hand collecting, sweeping, leg. Z. Erőss, A. Kenéz, P.G. Sulyán, Z. Vas.
- 236: Dealurile Crasnei (Krasznamenti-dombság), Crasna (Kraszna), near Vârșoț (Varsole) reservoir, willows and wet meadow, 15.07.2015, N47.178° E22.889°, 238m; hand collecting, sweeping, leg. P.G. Sulyán, Z. Vas.
- 252: Dealurile Crasnei (Krasznamenti-dombság), Aghireș (Egrespatak), dry sward with loess wall and abandoned orchard, 16.07.2015, N47.157° E22.992°, 323m; light trap on hilltop (21.15–24.00), leg. P.G. Sulyán, Z. Vas.
- 264: Munții Meseșului (Meszes-hegység), Poic, marshy meadow, 08.09.2015, N46.985° E22.920°; leg. A. Orosz, L. Ronkay, M. Tóth.
- 267: Dealurile Sălajului (Szilágymenti-dombság), Zalău-Ortelec (Zilah-Vártelek), oak forest on the top of the hill, semi-natural steppe, 09.09.2015, N47.212° E23.134°; netting, leg. A. Orosz.
- 271: Dealurile Boiului (Szamoszug), Vălișoara (Dióspatak), limestone hill, meadow, 10.09.2015, N47.360° E23.426°; netting, leg. A. Orosz.

#### ACKNOWLEDGEMENTS:

We are grateful to Gergely Osváth (Zoological Museum of the Babeș-Bolyai University, Cluj-Napoca) for the opportunity of examination of the Herman collection. János Király (Vasile Goldiș Western University of Arad) was helpful in the transportation and organising the field works for the study. We are thankful for the linguistic corrections to Ágnes Gerstner.

#### REFERENCES:

- Agencia Națională pentru Protecția Mediului (ANPM), Planul local de acțiune pentru protecția mediului – Județul Sălaj, Sălaj, 118 pp, 2007
- Brunner von Wattenwyl K, *Prodromus der europäischen Orthopteren*. W. Engelmann, Leipzig, xxxii + 466 pp., 11 pl., 1 map, 1882
- Čejchan, Eine neue Art der Gattung *Isophya* Br.-W. aus der Ostslowakei (Orthoptera-Tettigoniidae), *Nachrichtblatt der Bayerischen Entomologen*, 6, 124–126, 1957
- Fuss C, Beitrag zur Orthopteren- und Hemipterenfauna Siebenbürgens, *Verhandlungen und Mittheilungen des Siebenbürgischen Vereins für Naturwissenschaften zu Hermannstadt*, 4, 3, 40–46, 1853
- Gubányi A, Collecting sites of the Hungarian Natural History Museum in Sălaj, Romania, in 2014 and 2015, *Studia Universitatis "Vasile Goldiș"*, Seria Științele Vieții (Life Sciences Series), ..., 2016
- Harz K, *Die Orthopteren Europas*, Dr. W. Junk N.V., The Hague, 749 pp., 1969
- Heller K-G, Orci KM, Grein G, Ingrisch I, The *Isophya* species of Central and West Europe (Orthoptera: Tettigonoidea: Phaneropteridae), *Tijdschrift voor Entomologie*, 147, 2, 237–258, 2004
- Herman O, Die Dermapteren und Orthopteren Siebenbürgens, *Verhandlungen und Mittheilungen des Siebenbürgischen Vereins für Naturwissenschaften zu Hermannstadt* 21, 30–43, 1 pl., 1871a
- Herman O, Erdélyi bör- és egyenesröpi (Dermaptera et Orthoptera) (Die Dermapteren und Orthopteren Siebenbürgens), *Az Erdélyi Múzeum-Egylet Évkönyvei* 5, 3, 105–112 + XIII–XIV, 1 pl., 1871b
- Herman O, Pungur Gyula 1843–1907, *Aquila*, 14, 1–4, I–XXXII, pl. I, 1907
- International Commission on Zoological Nomenclature, *International Code of Zoological Nomenclature, Fourth Edition*, The International Trust of Zoological Nomenclature, London, XXIX + 306 pp., 1999
- Iorgu IȘ, Heller K-G, The bush-cricket *Isophya kraussii* (Orthoptera: Phaneropteridae): bioacoustics, distribution and description of a new subspecies from Romania, *Zootaxa*, 3640, 2, 258–269, 2013
- Iorgu I, Pisciă E, Păiș L, Lupu G, Iușan C, Checklist of Romanian Orthoptera (Insecta) and their distribution by eco-regions, *Travaux du Muséum National d'Histoire Naturelle „Grigore Antipa”* 51, 119–135, 2008
- Kis B, *Orthopterele din Jurul Clujului. Partea 1. (Les Orthoptères des environs de Cluj)*, *Studia Universitatis Babeș-Bolyai (Ser. 2, Fasc. 2)* 3, 151–156, 1958
- Kis B, *Orthopterele împrejurimii Clujului. Partea II. (Les Orthoptères des environs de Cluj)*, *Stud. Univ. Babeș-Bolyai (Ser. 2, Fasc. 2)* 4, 105–112, 1959

- Kis B, Revision der in Rumänien vorkommenden Isophya-Arten (Orthoptera, Phaneropterinae), *Acta Zoologica Academiae Scientiarum Hungaricae* 6, 349–369, 1960
- Kis B, Kónya I, Contributii la cunoasterea ortopterelor din imprejurimile oraşului Tirgu Mureş (Vorläufige Aufzeichnungen zur Kenntnis der Orthoptera der Umgebung von Tirgu Mureş), *Studii şi materiale, Muzeul Judetean Tirgu Mureş* 2, 1–7, 1967
- Kis B, Kónya I, Ortopterele din Cimpia Transilvaniei (Beitrag zum Kennenlernen der Orthopterenfauna der transylvanischen Ebene), *Studii si Materiale, Muzeul Judetean Tirgu Mureş* 3-4, 1–11, 1972
- Kis B, Vasiliu M, Kritisches Verzeichnis der Orthopterenarten Rumäniens, *Travaux du Muséum d'Histoire Naturelle "Grigore Antipa"*, 10, 207–227, 1970
- Krištín A, Balla M, Fabriciusová V, Hruz V, Kaňuch P, Orthoptera and Mantodea in fragments of seminatural habitats in lowlands of SE Slovakia and SW Transcarpathian Ukraine, *Articulata*, 26, 2, 109–121, 2011
- Krištín A, Kaňuch P (eds), Distribution of Isophya kraussi in Slovakia, <<http://www.orthoptera.sk>> (last access: 14.15.2015), 2015
- Molnár Á, Adatok Sztána és Zsobok környékének egyeneszárnyú (Insecta: Orthoptera) faunájához, *Sztánai Füzetek* 19, in print
- Nagy B, A revised check-list of Orthoptera-species of Hungary supplemented by Hungarian names of grasshopper species, *Folia Entomologica Hungarica – Rovartani Közlemények (Series nova)*, 64, 85–9, 2003
- Nagy B, Rácz IA, Orthopteroid insects in the Bükk Mountain. In: Mahunka, S. (ed.): *The Fauna of the Bükk National Park II*, Magyar Természettudományi Múzeum, Budapest, 95–124, 1996
- Nagy B, Rácz IA, Varga Z, The Orthopteroid insect fauna of the Aggtelek Karst region (NE Hungary) referring to zoogeography and nature conservation, In: Mahunka S (ed.), *The Fauna of the Aggtelek National Park*, Magyar Természettudományi Múzeum, Budapest, 83–102, 1999
- Nagy B, Šušlík V, Krištín A, Distribution of Orthoptera species and structure of assemblages along Slanské - Zemplén Mountains Range (SE Slovakia – NE Hungary), *Folia Entomologica Hungarica – Rovartani Közlemények (Series nova)*, 59, 17–27, 1998
- Nagy B, Szövényi G, Orthopteroid insects of Őrség Landscape Conservation Area (Western Hungary), *Savaria: a Vas megyei múzeumok értesítője, Pars historico-naturalis*, 24, 2, 7–23, 1997
- Országh I, Fedor P, On the history of research on orthopterous insects (Orthoptera) in Slovakia from 1800–1918, *Articulata*, 20, 1, 69–75, 2005
- Pungur Gy, Adatok egy kevésbé ismert szöcske-faj természetrajzához, *Mathematikai és természettudományi értesítő* 4, 5, 90–97, pl. II–III, 1886a
- Pungur Gy, Adatok egy kevésbé ismert szöcske-faj természetrajzához, *Rovartani lapok* 3, 3, 49–55, pl. I, 1886b
- Pungur Gy, Adatok Szilágyvármegye Orthoptera-faunájához (Beiträge zur Orthopterenfauna des Szilágyer Comitatus), *Értesítő az Erdélyi Múzeum-Egylet Orvos-Természettudományi Szakosztályából II. Természettudományi Szak* 13, 3, 255–266 + 351–352, 1891a
- Pungur Gy, A magyarországi tücsökfélék természetrajza (Histoire naturelle des Gryllides de Hongrie), *Királyi Magyar Természettudományi Társulat*, Budapest, vi + 79 pp, 6 pl., 1891b
- Pungur J, *Classis. Insecta. Ordo. Orthoptera*, In: *A Magyar Birodalom Állatvilága (Fauna Regni Hungariae) III. Arthropoda*, Királyi Magyar Természettudományi Társulat, Budapest, 1–16, 1899